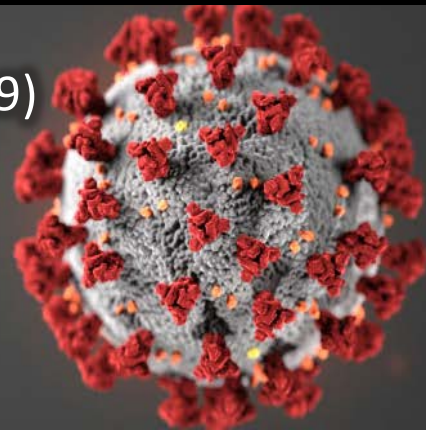


# Coronavirus Disease 2019 (COVID-19)

## Wyandot County Public Health

### Epidemiological Update

September 29, 2020



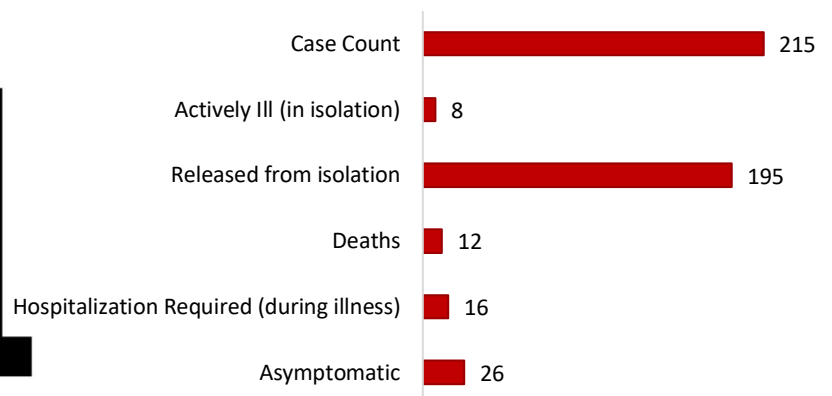
<b>Cumulative Case Count</b>	<b>215</b>
Confirmed Cases	188
Probable Cases	27
Antibody Testing <sup>1</sup>	10
Antigen Testing <sup>2</sup>	2
Case Rate <sup>3</sup>	950.7cases/100,000 residents
Long-Term Care Facilities Cases	41
Median Age (Years)	54
Average Age (Years)	52.7
Minimum Age (Years)	<1
Maximum Age (Years)	98
Range of Illness Onset Dates	January 16, 2020 – September 24, 2020

<sup>1</sup>This only includes antibody testing that has been authorized by the FDA under an emergency use authorization for use by authorized laboratories  
<sup>2</sup>This only includes antigen testing that has been authorized by the FDA under an emergency use authorization for use by authorized laboratories  
<sup>3</sup>The case rate is defined as the number of COVID-19 cases divided by the Wyandot County population reported in the 2010 U.S. Census

#### Sex of Cases:

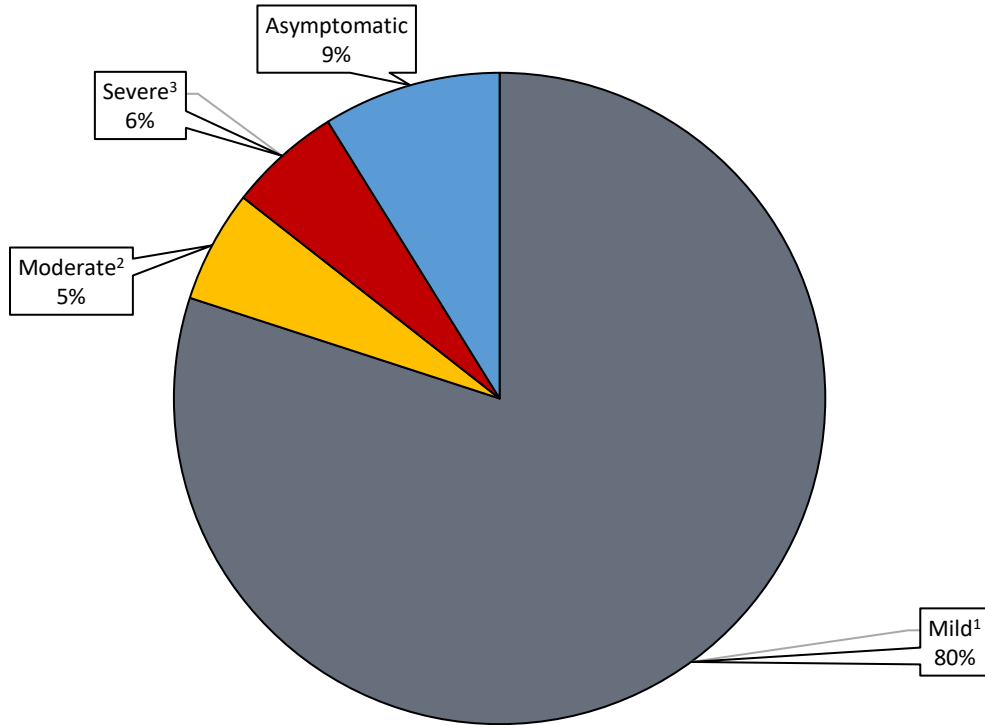


#### Health Status of Cases:



This data was collected at 3:30 PM on 9/29/2020

### Severity of Illness Among COVID-19 Cases Reported in Wyandot County

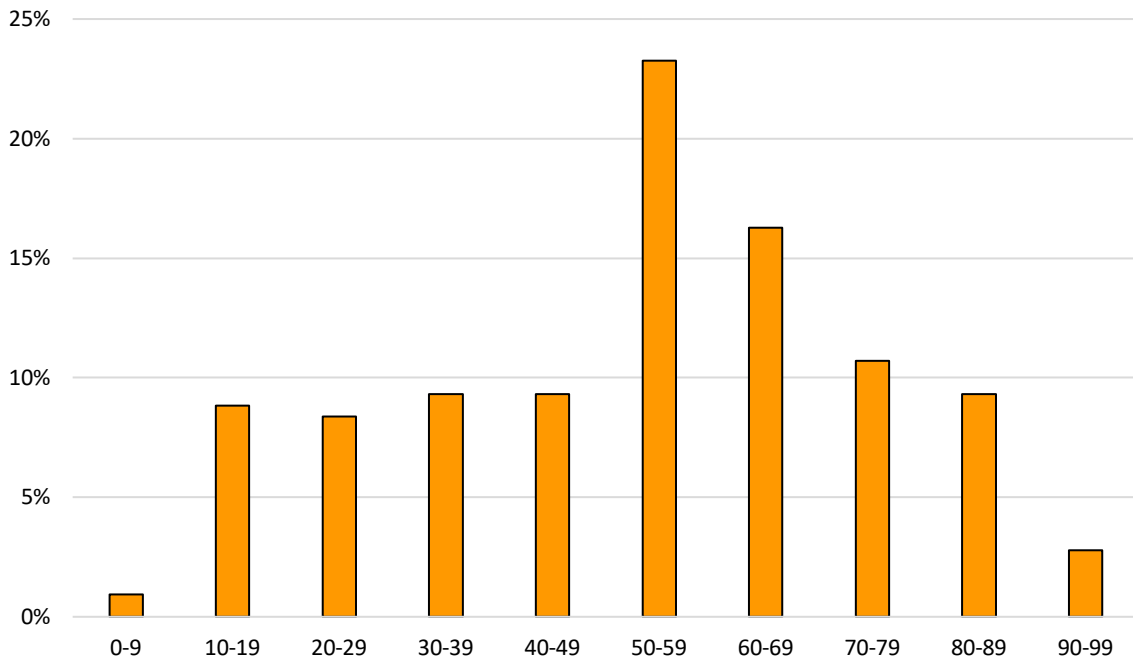


<sup>1</sup>Mild illness includes those who were able to recover at home

<sup>2</sup>Moderate illness includes cases who required hospitalization

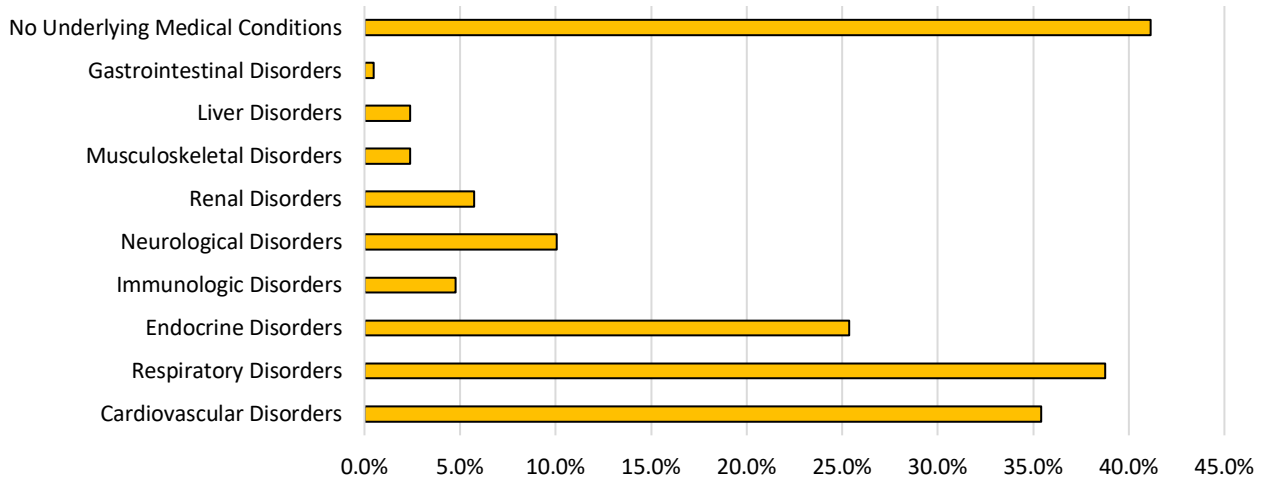
<sup>3</sup>Severe illness includes cases who were hospitalized in intensive care, were intubated, or died as a result of their illness

### Percentage of Wyandot County COVID-19 Cases by Age Group



This data was collected at 3:30 PM on 9/29/2020

## Underlying Health Conditions of Wyandot County COVID-19 Cases



Neurological Disorders include Parkinson's disease, Alzheimer's disease, epilepsy, and dementia

Liver Disorders include hepatitis

Renal Disorders include kidney reflux

Gastrointestinal Disorders include chronic diarrhea

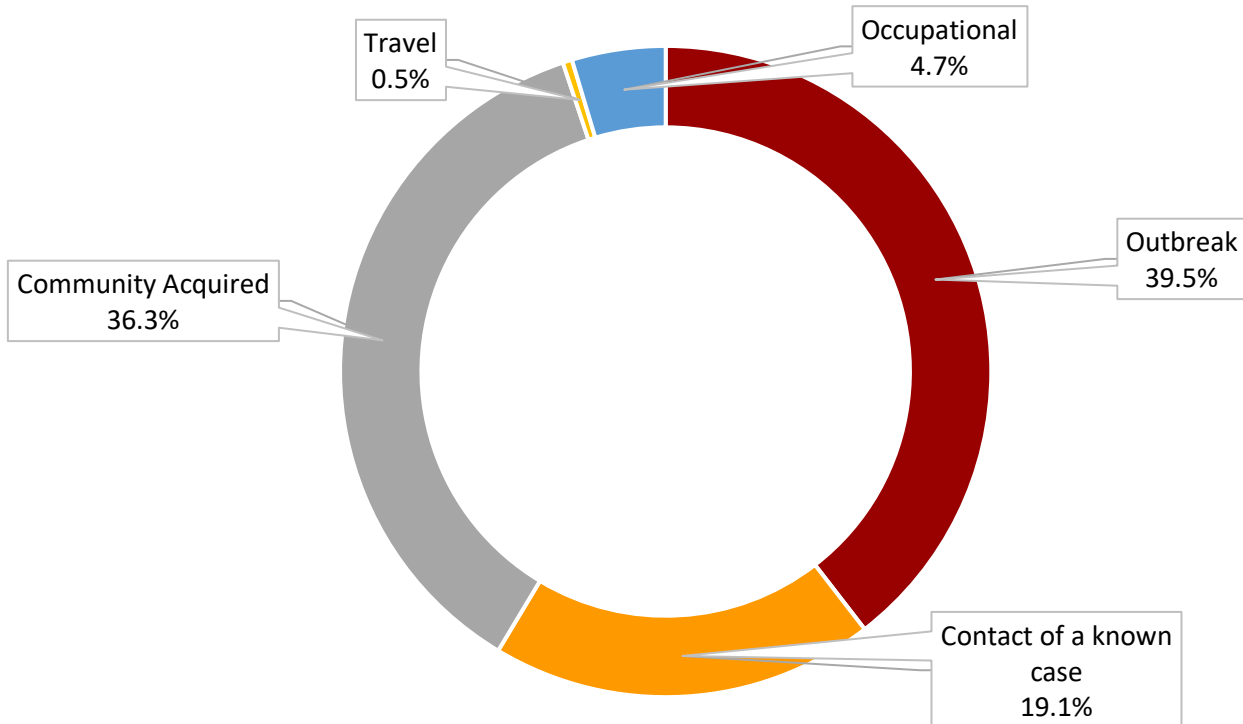
Endocrine Disorders include diabetes, hypothyroidism, prediabetes, and obesity

Musculoskeletal Disorders include rheumatoid arthritis and osteoporosis

Respiratory Disorders include chronic lung disease (Asthma/Emphysema/COPD/Bronchitis) and being a former or current smoker

Cardiovascular Disorders include atrial fibrillation and hypertension

## Wyandot County COVID-19 Case Exposures



<sup>1</sup>Community acquired denotes unknown source of exposure

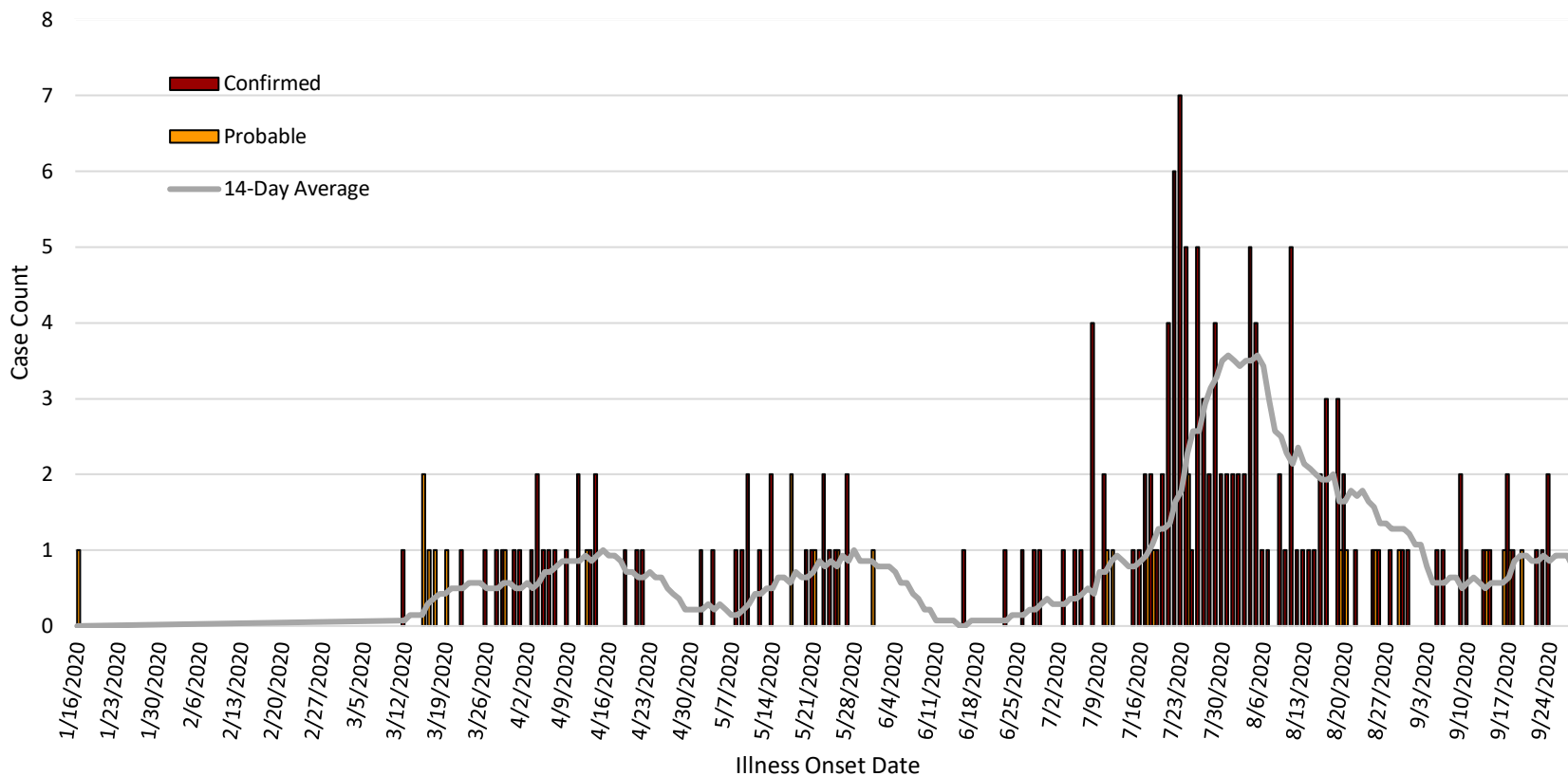
<sup>2</sup>Travel associated exposures include those acquired while visiting areas experiencing sustained community spread

<sup>3</sup>Occupational exposures include those working in the following settings: health care, first responder

<sup>4</sup>Oubreak denotes cases associated with an identified outbreak cluster

This data was collected at 3:30 PM on 9/29/2020

## Epidemiological Curve of Confirmed and Probable COVID-19 Cases<sup>1</sup> in Wyandot County by Illness Onset Date



<sup>1</sup> Cases for whom an illness onset date is not available are not illustrated. This may be due to the case not yet being interviewed or the case testing positive without experiencing any symptoms.

<sup>2</sup> 14-day average is the average number of cases with illness onset occurring in the previous two-week period

This data was collected at 3:30 PM on 9/29/2020

**To be released from isolation a person must meet the following criteria:**

1. Be fever free for at least 24 hours without the use of medicine that reduces fevers  
-AND-
2. Have improvement of symptoms (for example, cough or shortness of breath have improved)  
-AND-
3. At least 10 days have passed symptoms first began

For more information please visit: <https://www.cdc.gov/coronavirus/2019-ncov/if-you-are-sick/end-home-isolation.html>

**Case Definitions:**

Probable: includes the following:

- Individuals experiencing symptoms of COVID-19 who have either traveled to an area experiencing community spread or who are a contact of a laboratory confirmed case  
-OR-
- Individuals with a positive antibody or antigen result via a test authorized by an FDA under an emergency use authorization and who either were a contact of a laboratory confirmed case or who experienced symptoms of COVID-19

Confirmed: individuals with laboratory confirmation of COVID-19

Recovered: individuals who are no longer experiencing symptoms or have had improvement of symptoms and who have been released from isolation

**Wyandot County**



**Public Health**

Prevent. Promote. Protect.